

A nighttime photograph of a city skyline, likely New York City, featuring numerous illuminated skyscrapers and buildings against a dark blue sky. The lights from the buildings create a vibrant, glowing effect. The text is overlaid in the center of the image.

**"The future of buildings is smarter,
cleaner, and more efficient.
Understanding your data is the first step."**





NextSense

PONGRÁCZ
CHAMPAGNE

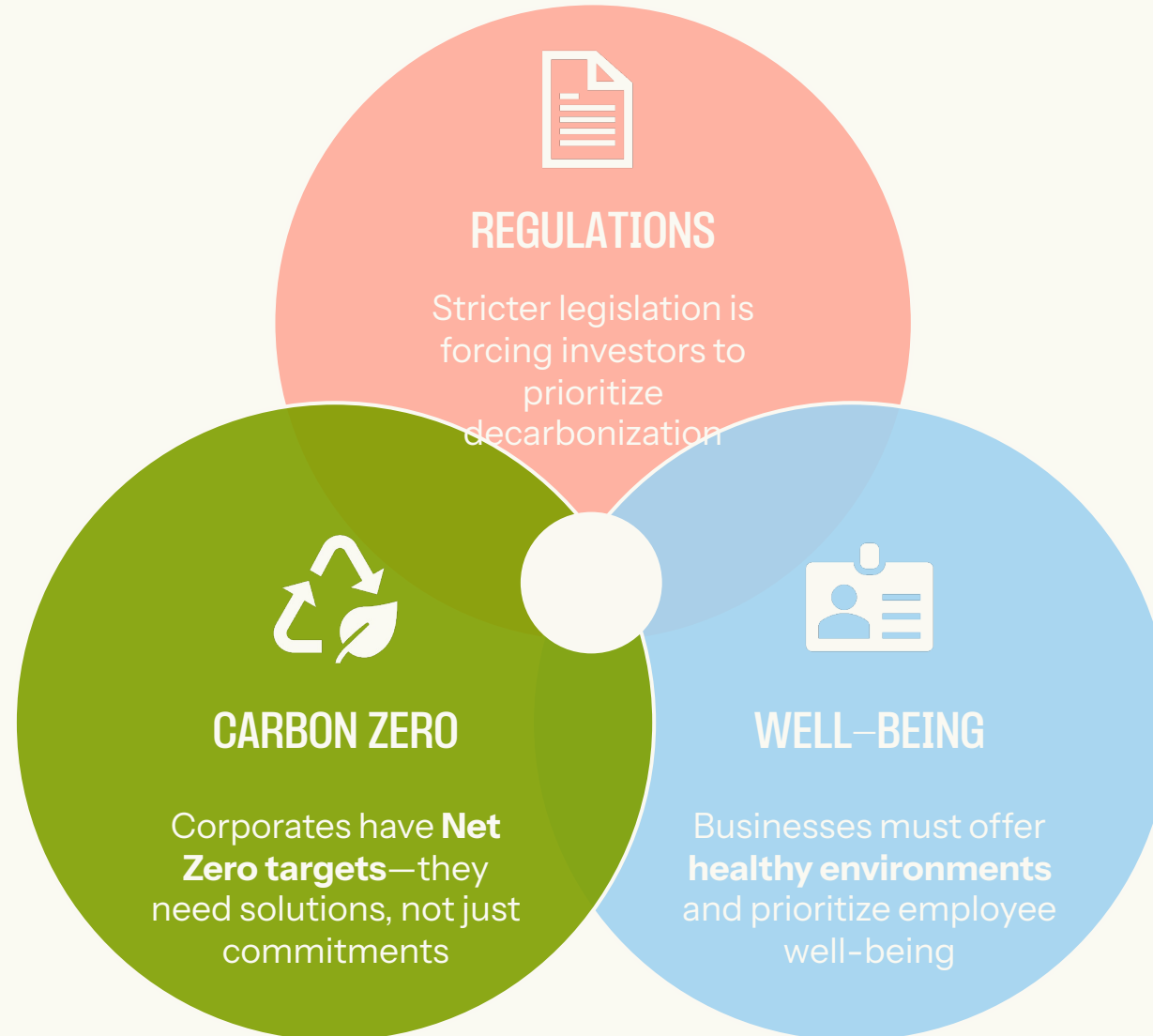
PONGRÁCZ
CHAMPAGNE



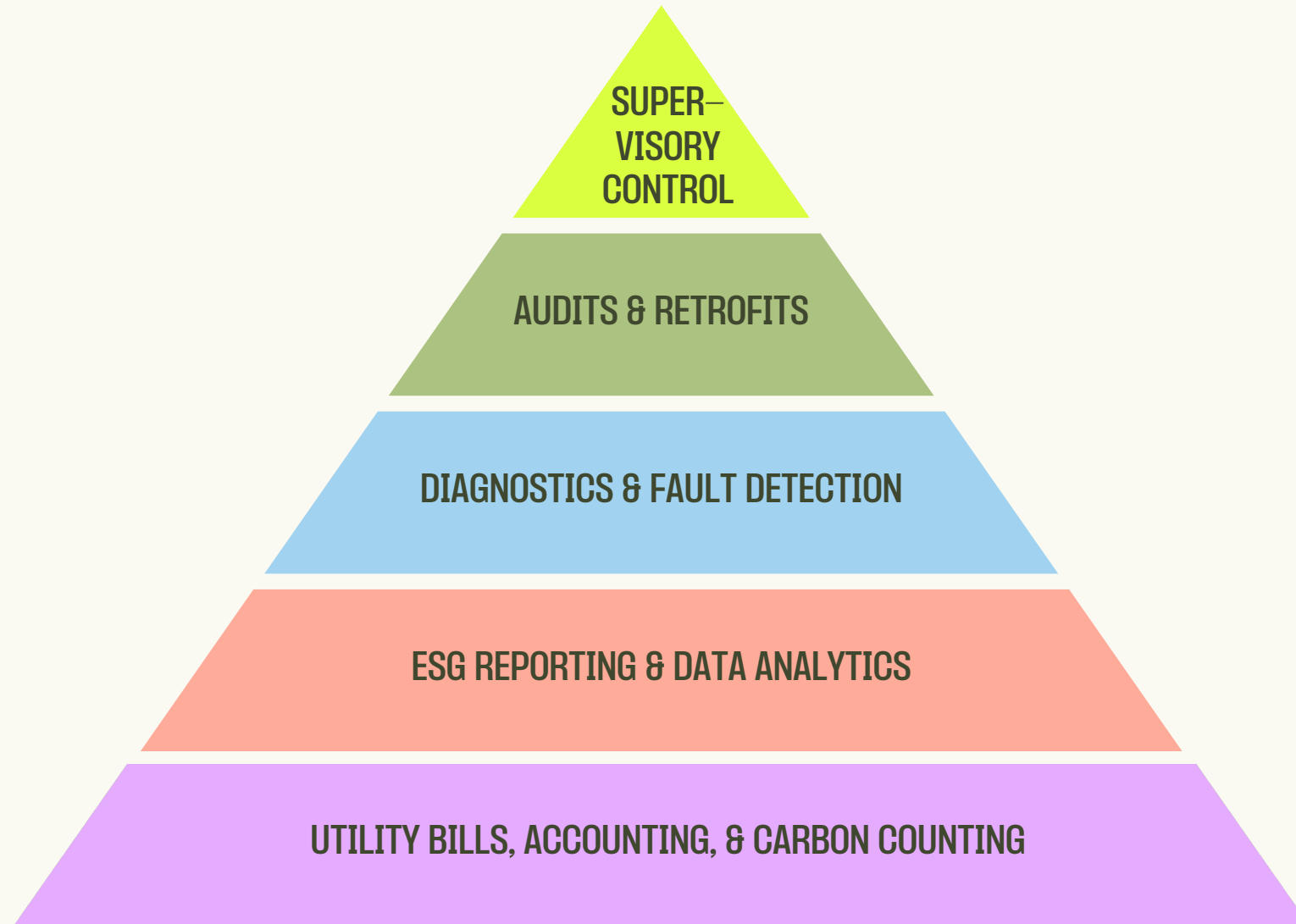
**Buildings are responsible for 40%
of global CO₂ emissions**

**... of that, 70% of emissions comes
from operational energy use**

Real Estate is Under Pressure



The hierarchy of needs in energy management



A Complete Solution for Smarter Buildings



Mastering The Pyramid: A Customer's Journey



THE CHALLENGE

- Disjointed, incomplete building performance data
- No centralized view on consumption
- Unclear where to start for strategic investments



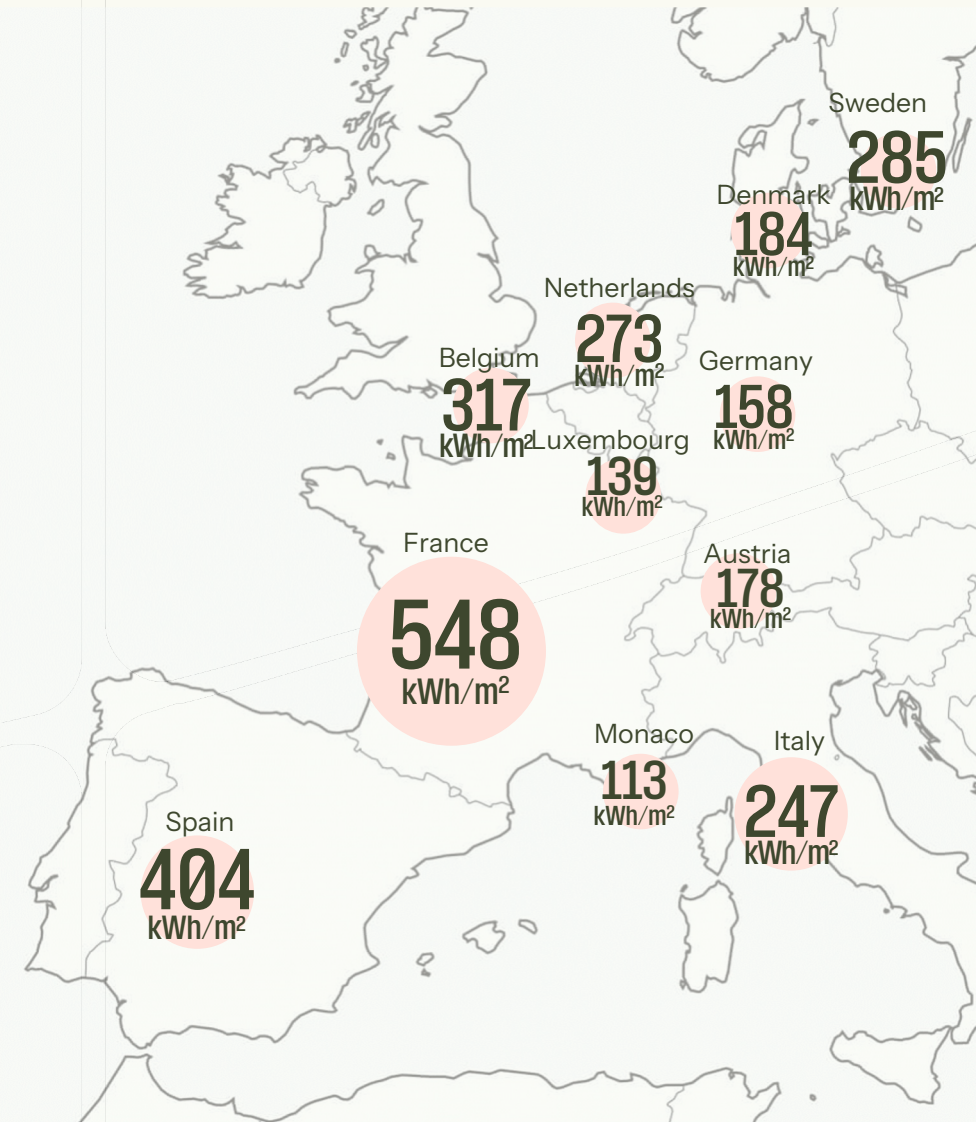
THE SOLUTION

- Centralized data monitoring & insights
- Portfolio-wide prioritization strategy
- Asset-specific actions & improvements



THE IMPACT

- 150+ properties onboarded across Europe
- Key assets for strategic improvements identified
- Uncovered **24% energy reduction** potential
- **1262 MWh annual savings** from a single ECM



Helping leading companies decarbonize and optimize their assets



Microsoft
Bucharest

Monitoring
19.510 m²



Microsoft
Sydney

Monitoring
13.631 m²



EDGE Hafencity
Hamburg

PIMCO
Monitoring
2.400 m²



EDGE Elside
Berlin

Vattenfall | HMG
Monitoring
22.168 m²



EDGE Eastside
Berlin

PIMCO | Amazon
Monitoring
64.900 m²



EDGE Suedkreuz
Berlin

Vattenfall | Colcap
Monitoring
22.000 m²



Fidia 1
Milan

Ardian
Monitoring
8.000 m²



Torre Chamartin
Madrid

Merlin
Monitoring
1000m²



Zalando
Berlin

Monitoring
1.960 m²



Air offices
Rotterdam

Schroders | Angelo
Gordon
Monitoring &
Control
23.400 m²



**ABN Amro
Coolsingel**
Rotterdam

Provast | AXA
Monitoring &
Control
27.000 m²



**Kauwgomballen
fabriek**
Amsterdam

Timeless | NEOO
Monitoring &
Control
7.500 m²

**"We transform scattered data into
strategic roadmaps for smarter
building investments"**

www.next-sense.com

k.ryabets@next-sense.com